

# LSD Deputy Reports

August 31 – September 05, 2012  
(R. Lauze)

September 06 – September 12, 2012  
(A. Freyberger/D. Napier)

	M	T	W	T	F
8-26	27	28	29	30	31
Lauze	LSD: Lauze	LSD: Lauze	LSD: Lauze Opsnet core switch upgrade	LSD: Lauze	LSD: Lauze
	<ul style="list-style-type: none"> <li> CHL#1 Cooling Twr</li> <li> S&amp;A: 0L0R bolts</li>   <li> TL Vacuum Maintenance</li> <li> NL Cryo Pipe Mods</li> <li> RT vlv sft seal PM</li>   <li> 1R bolt torque</li> <li> S&amp;A: SLinac 2B align</li> <li> SL CM maint</li>   <li> 2R Lifting Plates</li> <li> iocin2 to 3.14</li> <li> Linac U-Tube PM/mods</li> <li>S&amp;A: QC XB light guide</li> </ul>	<ul style="list-style-type: none"> <li> CHL#1 Cooling Twr</li>   <li> TL Vacuum Maintenance</li> <li> NL Cryo Pipe Mods</li> <li> RT vlv sft seal PM</li> <li> Replace RT valve stem</li>   <li> 1R bolt torque</li> <li> S&amp;A: 1R Stand align</li> <li> S&amp;A: SLinac 2B align</li> <li> Penetration Repairs</li> <li> SL CM maint</li> <li> iocin2 to 3.14</li> <li><i>Tour: Stand vendor</i></li> <li> Linac U-Tube PM/mods</li> </ul>	<ul style="list-style-type: none"> <li> CHL#1 Cooling Twr</li>   <li> TL Vacuum Maintenance</li> <li> NL Cryo Pipe Mods</li> <li> RT vlv sft seal PM</li> <li> Replace RT valve stem</li>   <li> 1R stand inst</li> <li>1R stand align</li> <li> S&amp;A: SLinac 2B align</li> <li> Penetration Repairs</li> <li> SL CM maint</li> <li> 2R B-com ld tst</li> <li>WArc gate inst</li> </ul>	<ul style="list-style-type: none"> <li> CHL#1 Cooling Twr</li> <li> 0L/0R stand inst</li>   <li> 1S+ plate torque</li> <li> TL Vacuum Maintenance</li> <li> NL Cryo Pipe Mods</li> <li> RT vlv sft seal PM</li> <li> Replace RT valve stem</li> <li> S&amp;A EArc 2A align</li> <li> 1R girder inst</li>   <li> S&amp;A: SLinac 2B align</li> <li> Penetration Repairs</li> <li> SL CM maint</li> <li> Telephone PM NLinac</li> <li><i>Tour: Legislitve Liaisons</i></li> <li>S&amp;A: FEL HVPS el.</li> </ul>	<ul style="list-style-type: none"> <li> CHL#1 Cooling Twr</li> <li> 0L/0R stand inst</li> <li> S&amp;A: 0L/0R stand align</li> <li> VIP1L11B TS</li> <li> TL Vacuum Maintenance</li> <li> NL Cryo Pipe Mods</li> <li> RT vlv sft seal PM</li> <li> Replace RT valve stem</li> <li> S&amp;A EArc 2A align</li> <li> 1R prep &amp; cleanup</li>   <li> S&amp;A: SLinac 2B align</li> <li> Penetration Repairs</li> <li> SL CM maint</li> </ul>
9-02	03	<b>04</b>	05	06	07
Lauze	LSD: Lauze	LSD: Lauze	LSD: Lauze	LSD: Freyberger	LSD: Freyberger
	<b>JLab Holiday</b>	<ul style="list-style-type: none"> <li> CHL#1 Cooling Twr</li> <li> S&amp;A: 0L/0R stand align</li> <li> VIP1L11A swap</li> <li> TL Vacuum Maintenance</li> <li> NL Cryo Pipe Mods</li> <li> SL CM maint</li> <li> EArc 2A align</li> <li> Penetration Repairs</li> <li> S&amp;A: SLinac 2B align</li> <li> Shield valve soft seal</li> <li> WArc stand align</li> <li> LINAC Primary Relief</li> <li> RT vlve soft seal swap</li> </ul>	<ul style="list-style-type: none"> <li> CHL#1 Cooling twr</li> <li> S&amp;A: 2R+ bolt layout</li>   <li> TL Vacuum Maintenance</li> <li> NL Cryo Pipe Mods</li> <li> SL CM maint</li> <li> EArc 2A align</li> <li> Penetration Repairs</li> <li> S&amp;A: SLinac 2B align</li> <li> Shield valve soft seal</li> <li> LINAC Primary Relief</li> <li> RT vlve soft seal swap</li> <li> 2R B-com remv</li> </ul>	<ul style="list-style-type: none"> <li> CHL#1 Cooling twr</li> <li> S&amp;A: 2R+ bolt layout</li>   <li> TL Vacuum Maintenance</li> <li> NL Cryo Pipe Mods</li> <li> SL CM maint</li> <li> EArc 2A align</li> <li> Penetration Repairs</li> <li> S&amp;A: SLinac 2B align</li> <li> Shield valve soft seal</li> <li> LINAC Primary Relief</li> <li> RT vlve soft seal swap</li> </ul>	<ul style="list-style-type: none"> <li> CHL#1 Cooling twr</li>   <li> TL Vacuum Maintenance</li> <li> NL Cryo Pipe Mods</li> <li> SL CM maint</li> <li> EArc 2A align</li> <li> Penetration Repairs</li> <li> S&amp;A: SLinac 2B align</li> <li> Shield valve soft seal</li> <li> LINAC Primary Relief</li> <li> RT vlve soft seal swap</li> </ul>

# SAD Calendar

Schedule Accelerator Down

Week 37 2012

Key

Good Plan    Tentative Plan    Major Event    Incomplete Task  
 Lock Up    Utility Interruption    Radcon Group    Special Support  
 Sublet    New/Changed    @ ATlix Task

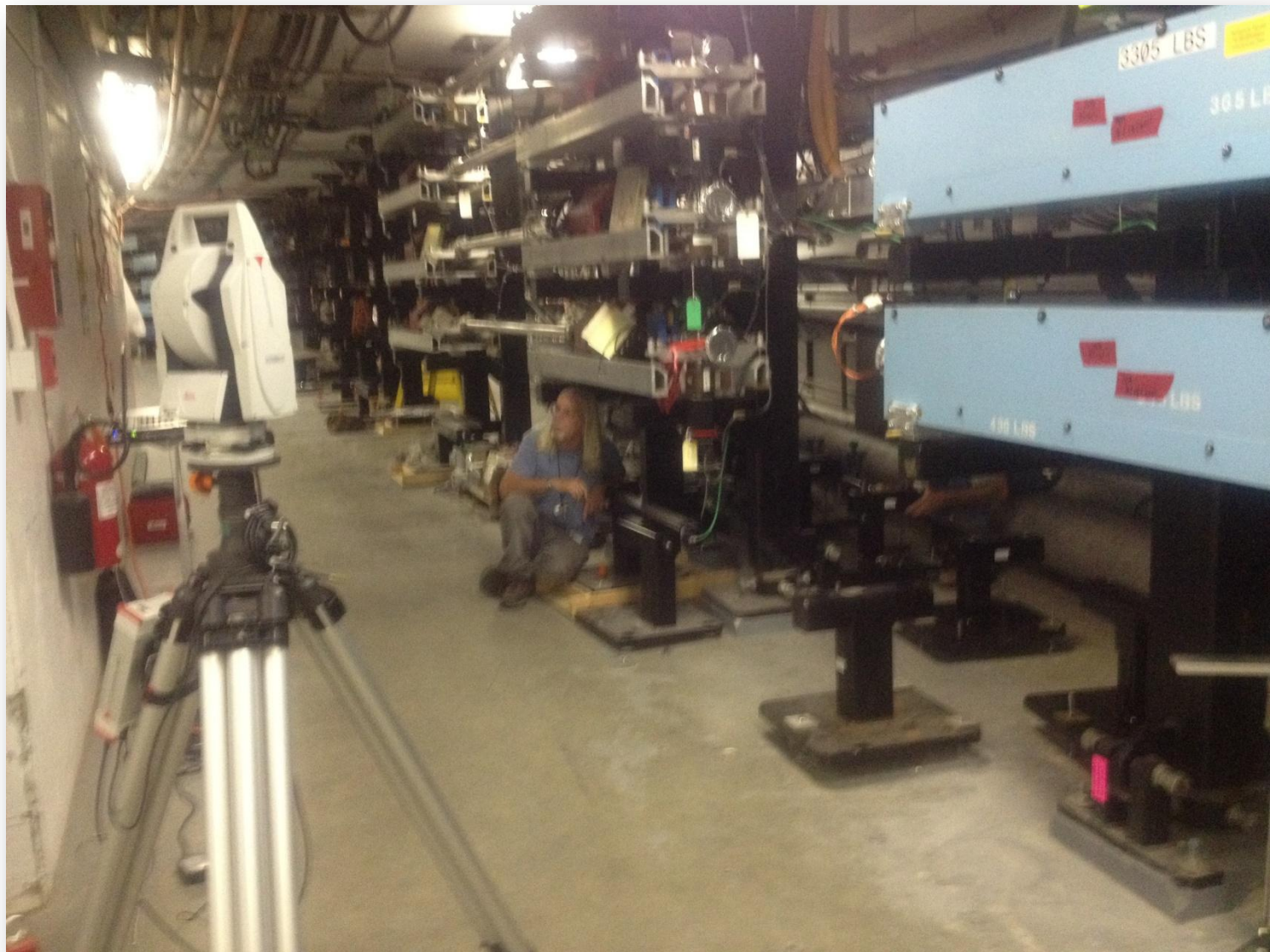
	Sun	M	T	W	T	F	Sat
37	2012-09-09	10	11	12	13	14	15
Owl	LSD: Freyberger	LSD: Napier	LSD: Napier	LSD: Napier LSD: Freyberger Tunnel Safety Training	LSD: Freyberger	LSD: Freyberger	LSD:
Day		<ul style="list-style-type: none"> <li>☞ CHL#1 Cooling twr</li> <li>☞ JR cartridge inst</li> <li>☞ SRF CM PM NL</li> <li>☞ NL stone drop</li> <li>☞ 1R inst</li> <li>☞ SL Penetr grout</li> <li>☞ S&amp;A: SLinac 23</li> <li>☞ SL CM maint</li> <li>☞ TL Vacuum</li> <li>☞ LINAC Primary</li> <li>☞ NAB Power Outage</li> <li>☞ S&amp;A XA network</li> <li>☞ iocn3 to 3.14</li> </ul>	<ul style="list-style-type: none"> <li>☞ CHL#1 Cooling twr</li> <li>☞ 2R anchors &amp; peds.</li> <li>☞ W/Arc magnets</li> <li>☞ SRF CM PM NL</li> <li>☞ SL Penetr grout</li> <li>☞ S&amp;A: SLinac 2B</li> <li>☞ SL CM maint</li> <li>☞ TL Vacuum</li> <li>☞ 1 1/2 bayonet ball</li> <li>☞ 3 1/8" gate valve</li> <li>☞ LINAC Primary</li> <li>☞ NAB Power Outage</li> <li>☞ S&amp;A XA network</li> <li>☞ iocin3 to 3.14</li> <li>☞ BSY dump float TS</li> <li>800T chiller commiss.</li> <li>FEL PSS Cert</li> <li>Tour: Rotary SAB</li> </ul>	<ul style="list-style-type: none"> <li>☞ CHL#1 Cooling twr</li> <li>☞ OR girders</li> <li>☞ W/Arc magnets</li> <li>☞ SRF CM PM NL</li> <li>☞ 1S/2R cable pulls</li> <li>☞ Penetration Repairs</li> <li>☞ S&amp;A NL align</li> <li>☞ TL Vacuum</li> <li>☞ 1 1/2 bayonet ball</li> <li>☞ 3 1/8" gate valve</li> <li>☞ LINAC Primary</li> <li>☞ NAB Power Outage</li> <li>☞ S&amp;A XA network</li> <li>☞ iocin3 to 3.14</li> <li>☞ Vent repairs SL5B</li> </ul>	<ul style="list-style-type: none"> <li>☞ CHL#1 Cooling twr</li> <li>☞ 2R/DR girders &amp;</li> <li>☞ SRF CM PM NL</li> <li>☞ 1S/2R cable pulls</li> <li>☞ 1R inst</li> <li>☞ Penetration Repairs</li> <li>☞ S&amp;A NL align</li> <li>☞ 2" pipe SAB to 1S+</li> <li>☞ TL Vacuum</li> <li>☞ 1 1/2 bayonet ball</li> <li>☞ 3 1/8" gate valve</li> <li>☞ LINAC Primary</li> <li>☞ NAB Power Outage</li> <li>☞ S&amp;A XA network</li> <li>☞ iocin1 from 3.13 to 3.14</li> <li>☞ Vent repairs SL5B</li> </ul>	<ul style="list-style-type: none"> <li>☞ CHL#1 Cooling twr</li> <li>☞ SRF CM PM NL</li> <li>☞ 1S/2R cable pulls</li> <li>☞ 1R inst</li> <li>☞ Penetration Repairs</li> <li>☞ S&amp;A NL align</li> <li>☞ 2" pipe SAB to 1S+</li> <li>☞ TL Vacuum</li> <li>☞ 1 1/2 bayonet ball</li> <li>☞ 3 1/8" gate valve</li> <li>☞ LINAC Primary</li> <li>☞ NAB Power Outage</li> <li>☞ S&amp;A XA network</li> <li>☞ iocin1 from 3.13 to 3.14</li> <li>☞ Vent repairs SL5B</li> </ul>	CHL2 comp tst
Swing							

## Summary (Aug 31 – Sept 5) – R. Lauze

- S&A of SLinac 2B CMs & Girders, EArc 2A and 0L/0R progressing nicely
- Installed 5 girders in 1R
- 0L/0R baseplates formwork installed & prepped for grouting
- Penetration subcontractor installing E-Plates and reinforcing for grout pour
- CHL Cooling Tower work continues
- SRF Vacuum recovery continues. Replaced NL11 vacuum ion pump
- 12GeV viewer system cable terminations continues
- Cryo Transfer Line PM continues
- Installed PSS duct work in Hall D transport tunnel
- Hall C clean-up continues
- FEL GTS HVPS Driver boards (6 of 8) burned

## Summary (Sept 6 – Sept 12) – A. Freyberger/D. Napier

- S&A of SLinac 2B completed (except for penetrations 2L02, 3 and 9 where FML is grouting leaking penetrations). Focus moved to Nlinac CMs & girders & Hall A network.
- 0L/0R base plates grouted. Girders in 0L installed.
- Installed 1<sup>st</sup> dipoles in 1R region. 5 girders in 1R installed.
- 4 dipoles & girders installed in West Arc area. Drilling and setting 2R+ anchors.
- Penetration subcontractor grouted 1 SLinac zone.
- CHL Cooling Tower work continues.
- NAB power outage for 12GeV PS (relocation of power for panels). Cable pulls and terminations. SAB had a breaker that would not trip and work postponed to next week.
- 12GeV Viewer system cable terminations continues.
- 12GeV shunts & trim cable installation started in 1S (NL27 area).
- SRF Vacuum recovery continues in the SLinac. NL work in progress now.
- Cryo Transfer Line PM focuses in the NLinac and moving towards the SLinac.
- FEL PSS certification completed.



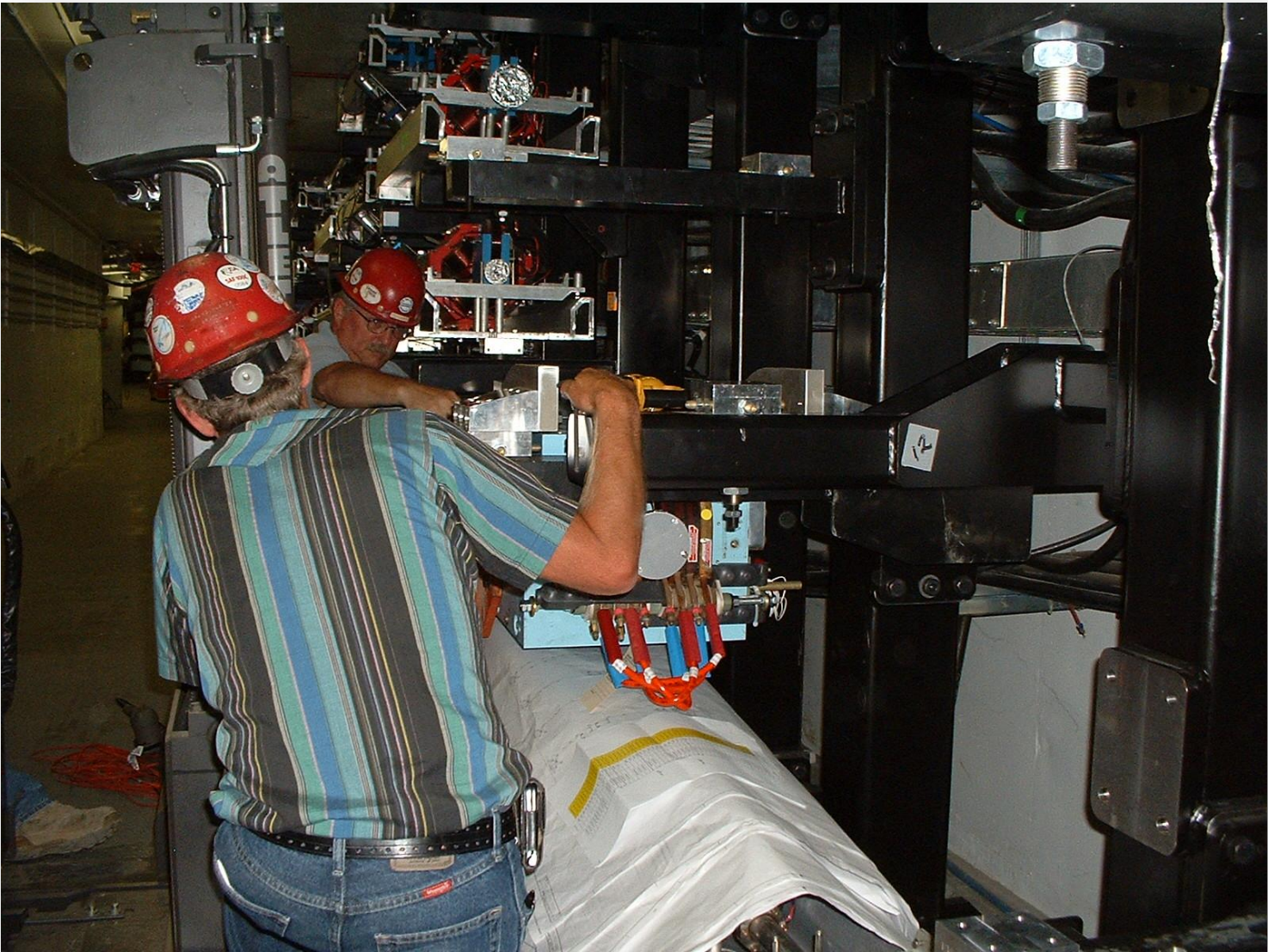
S&A- Stands in 0L/0R Region



Girders installed in 1R

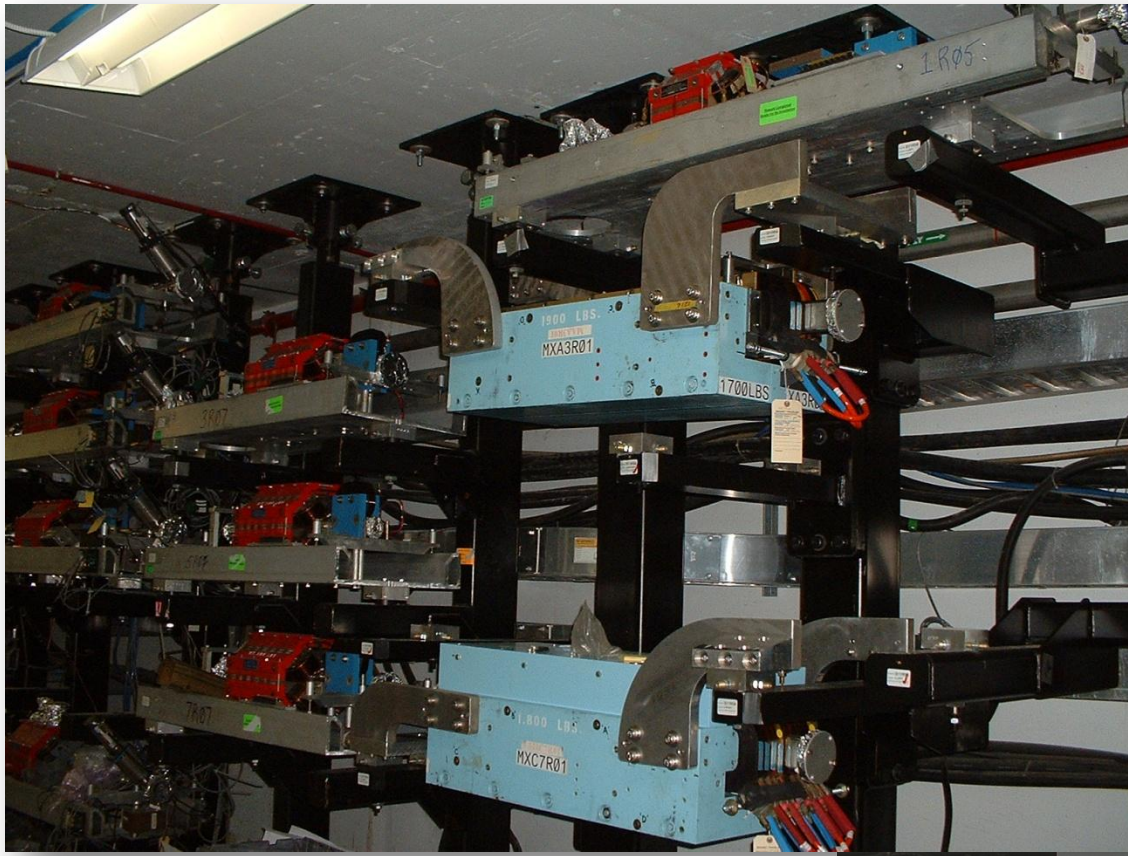


Additional Staged for 1R

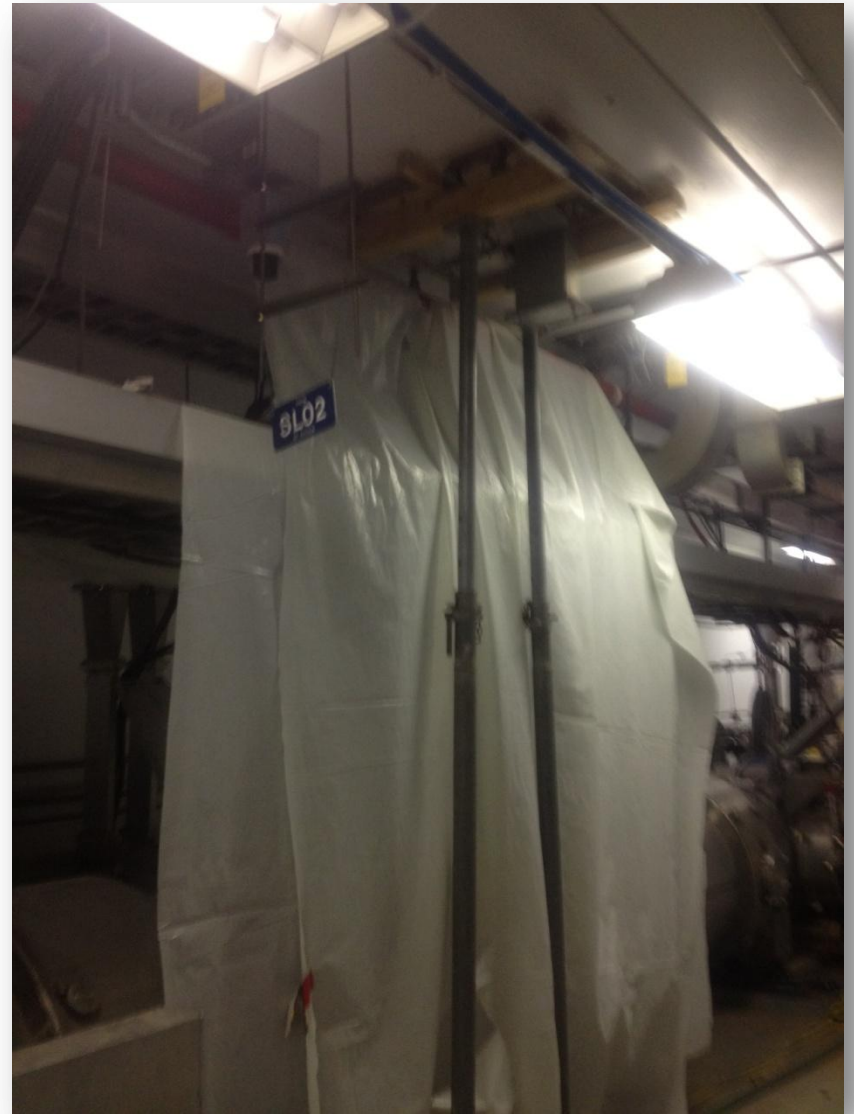


1R Dipole Installation





1R Region



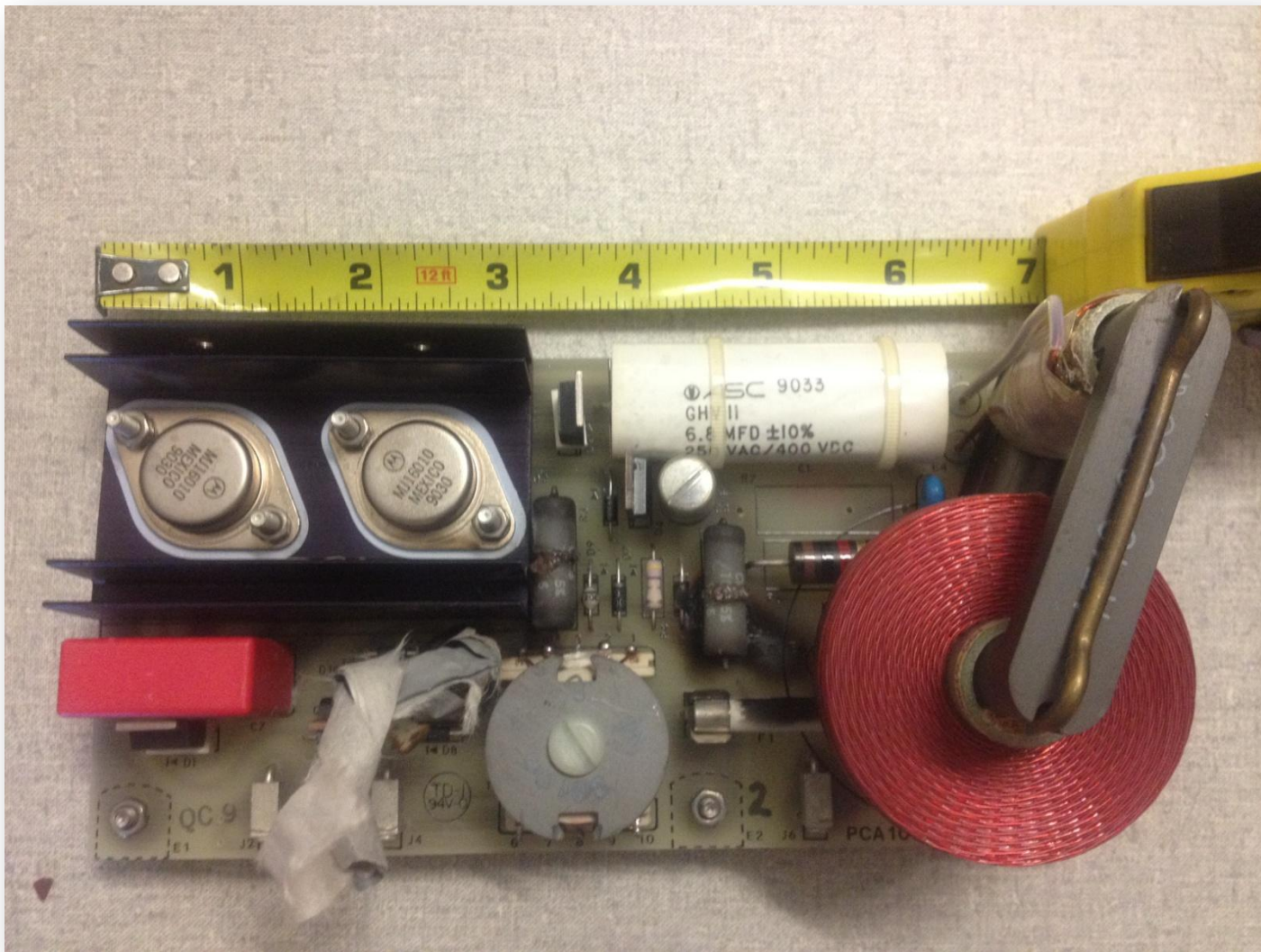
Installing E-Plates and Shoring for Grout Pour



Replacing VIP1L11B due to  
HV Feed-Thru on NLinac 11



Continuing the Clean-Up in Hall C



FEL Gun Test Stand HVPS Driver Board